

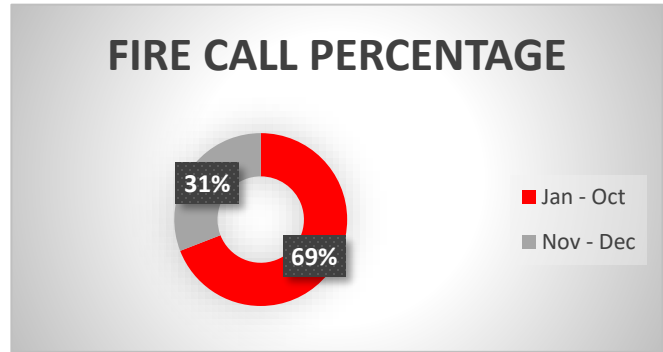
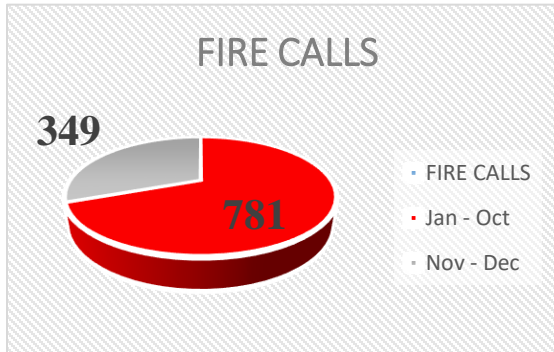
## EMERGENCY REPORT

S/N	TYPE OF CALL	JAN	FEB	MAR	APR	MAY	JUN	JUL	AUG	SEP	OCT	NOV	DEC	TOTAL
1	FIRE CALL	131	90	96	72	61	63	63	72	66	69	120	229	1130
2.	RESCUE CALL	5	3	13	6	6	3	10	9	11	6	10	9	93
3.	SALVAGED	3	3	2	3	0	0	2	1	4	2	5	9	34
5.	EXPLOSION	0	0	0	0	0	0	1	0	0	0	0	0	1
6.	FALSE CALL	9	5	3	5	5	2	3	8	3	5	63	132	243
7.	COLLP. BUILD.	0	0	0	1	3	0	1	1	2	0	0	0	8
8.	TOTAL	148	101	114	87	75	68	80	91	86	82	198	379	1509
9.	VICTIMS RESCUED ALIVE	0	5	3	0	32	6	5	4	11	30	13	18	127
10.	VICTIMS RECOVERED SUSPECTED DEAD	3	4	6	2	16	1	1	20	6	5	4	2	70
11.	EST. PROPERTIES SAVED	N8,88B	N6,06B	N6,84B	N5,22B	N4,5B	N4,08B	N4,8B	N5,46B	N5,16B	N4,92B	N11,88	N22,74B	N90,54B
12.	EST. PROPERTIES LOSS	N1,48B	N1,01B	N1,14B	N0,87B	N0,75B	N0,68B	N0,8B	N0,91B	N0,86B	N0,82B	N1,98B	N3,79B	N15,09B

# EMERGENCY CALLS ANALYSIS BETWEEN JAN. – OCT. and NOV. – DEC., 2022

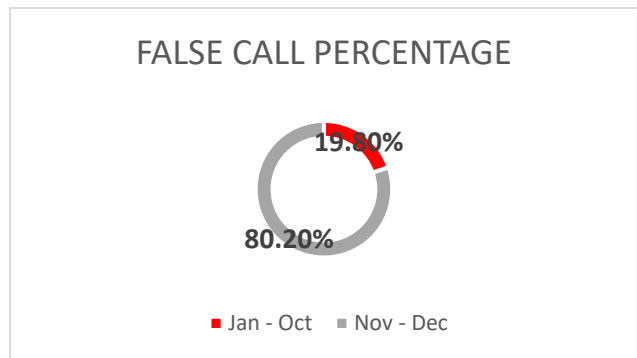
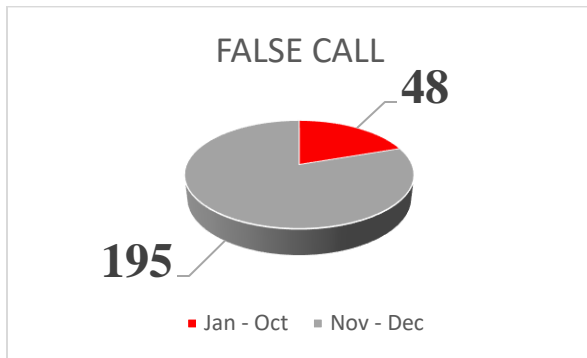
FIRE CALLS	
Jan - Oct	781
Nov - Dec	349

Percentage Diff for Fire Call	
Jan - Oct	69.10%
Nov - Dec	30.90%

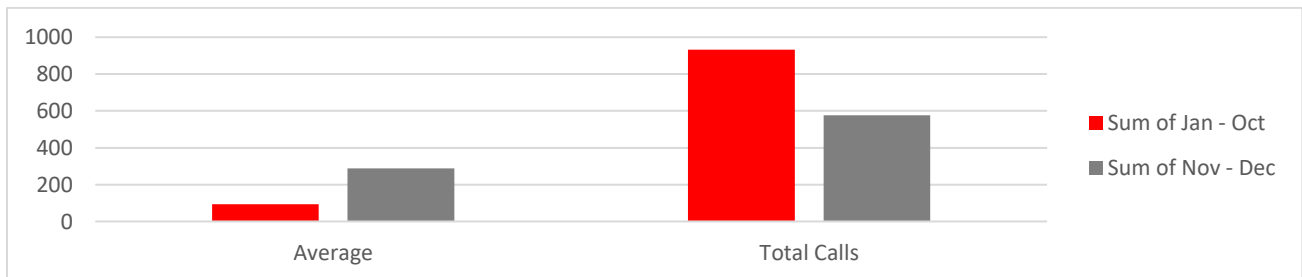


False Call	
Jan - Oct	48
Nov - Dec	195

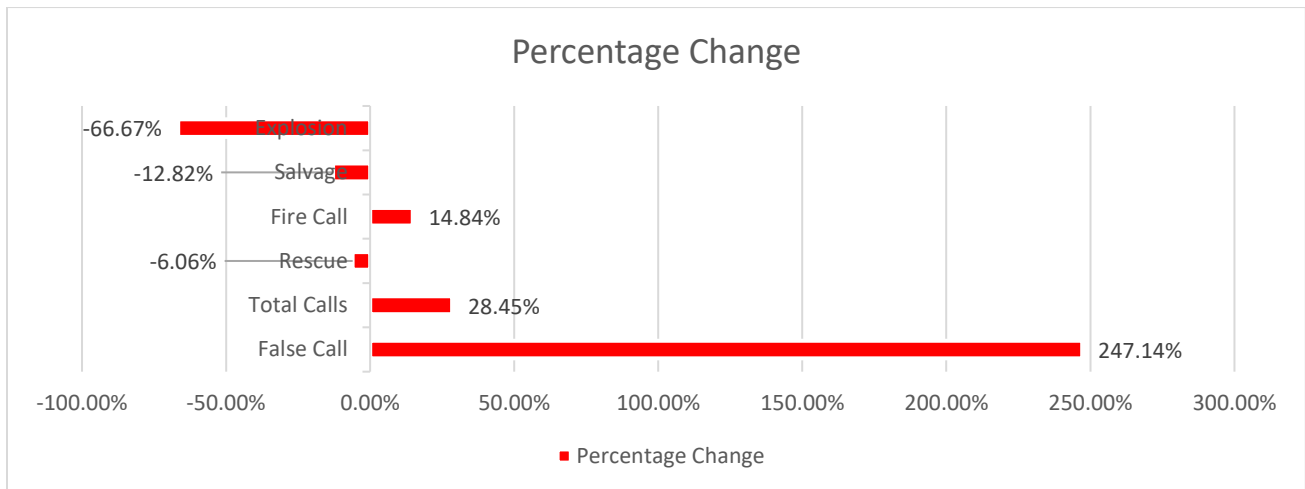
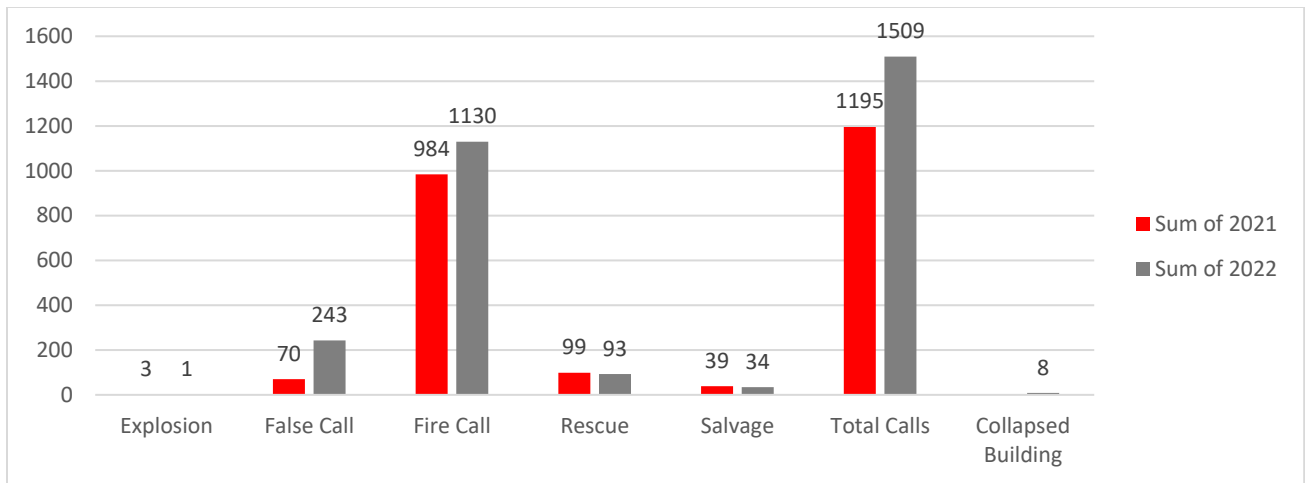
Percentage Diff. for False Call	
Jan - Oct	19.80%
Nov - Dec	80.20%



AVERAGE CALLS	Jan - Oct	Nov - Dec
Total Calls	932	577
Average	93.2	288.5



Percentage Difference of Fire Calls Jan – Oct/Nov – Dec	38.2%
Percentage Difference of False Calls Jan – Oct/Nov – Dec	60.4%



Data	2021	2022	Percentage Change
Collapsed Building	0	8	-
False Call	70	243	247.14%
Fire Call	984	1130	14.84%
Rescue	99	93	-6.06%
Salvage	39	34	-12.82%
Explosion	3	1	-66.67%
Total Calls	1195	1509	26.28%

